



A DIVISION OF SUNRISE WINDOWS, LTD.

Fixed Window

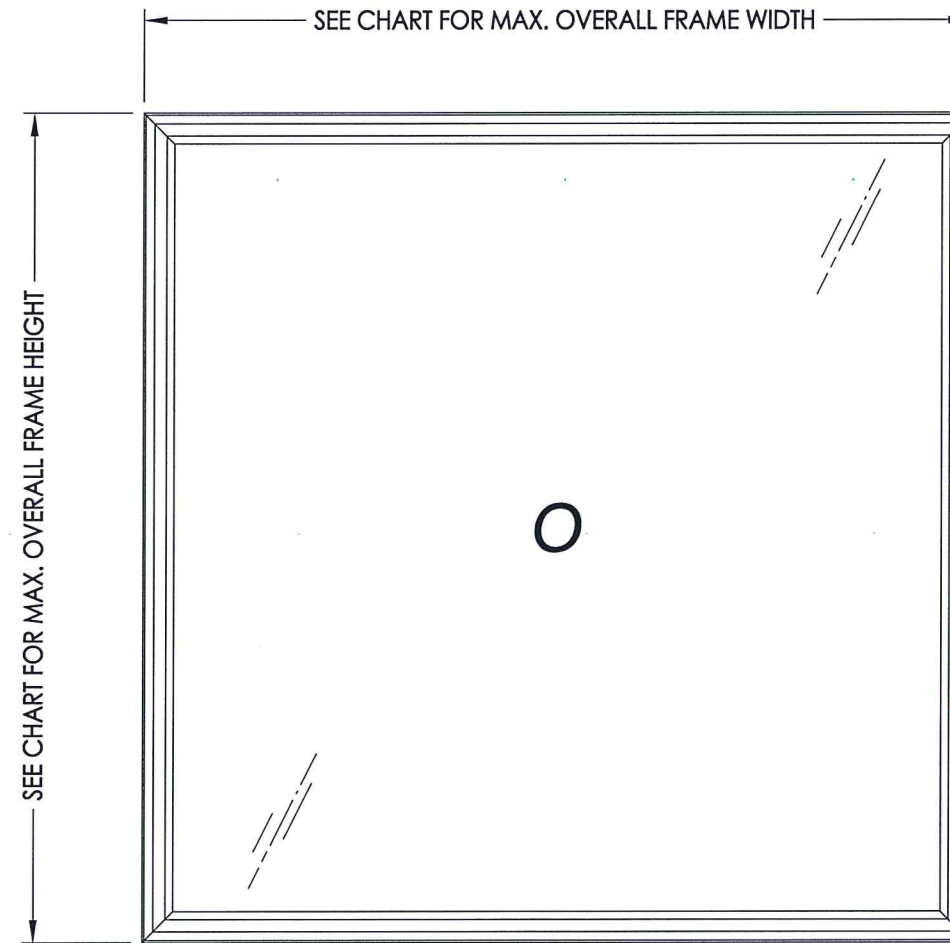
"NON-IMPACT"

EVALUATED FOR USE IN THE STATE OF TEXAS

The Fixed Window described herein complies with the 2006 International Residential Code (IRC), Sections R301 & R613 and the 2006 International Building Code (IBC), Sections 1405.12, 1609, 1714.5, 2403 and 2404 (including Texas revisions) subject to the following conditions:

1. Anchors shall be as listed and spaced as shown in the details. Anchor embedment to base material shall be beyond wall dressing or stucco.
2. When used in areas requiring wind-borne debris protection this product is required to be protected with an impact resistant covering that complies with Section R301.2.1.2 of the IRC and Section 1609.1.2 of the IBC.
3. Allowable design pressure requirements must be equal to or less than the design pressure rating shown in the design pressure chart, sheet 1 of this drawing.
4. Conditions not covered by this drawing are subject to further engineering analysis.

| TABLE OF CONTENTS | |
|-------------------|--|
| SHEET # | DESCRIPTION |
| 1 | Typical Elevations, Design Pressures & General Notes |
| 2 | Frame Anchoring & Cross Section |
| 3 | Bill of Materials, Components & Glazing Details |



| MAX. OVERALL FRAME DIMENSION | MAX DAY LITE DIMENSION | GLASS TYPE | DESIGN PRESSURE (PSF) | |
|------------------------------|------------------------|------------|-----------------------|-------|
| | | | POS. | NEG. |
| 56.0" X 56.0" | 50.625" x 50.625" | G1 | +50.0 | -50.0 |
| 72.0" X 72.0" | 66.5" x 66.5" | G2 | +50.0 | -50.0 |



P. 27.19

Documents Prepared By: Lyndon F. Schmidt, P.E.
TEXAS P.E. #104123

RW BUILDING CONSULTANTS, INC.
P.O. Box 230 Valrico FL 33595
Phone No.: 813.659.9197

TEXAS BOARD OF PROFESSIONAL ENGINEERS
CERTIFICATE OF REGISTRATION # F-11852

PRODUCT: FIXED WINDOW

PART OR ASSEMBLY: TYPICAL ELEVATION, DESIGN PRESSURES & GENERAL NOTES

| NO. | DATE | BY | REVISIONS |
|-----|------|----|-----------|
| | | | |
| | | | |
| | | | |

DATE: 5/13/19

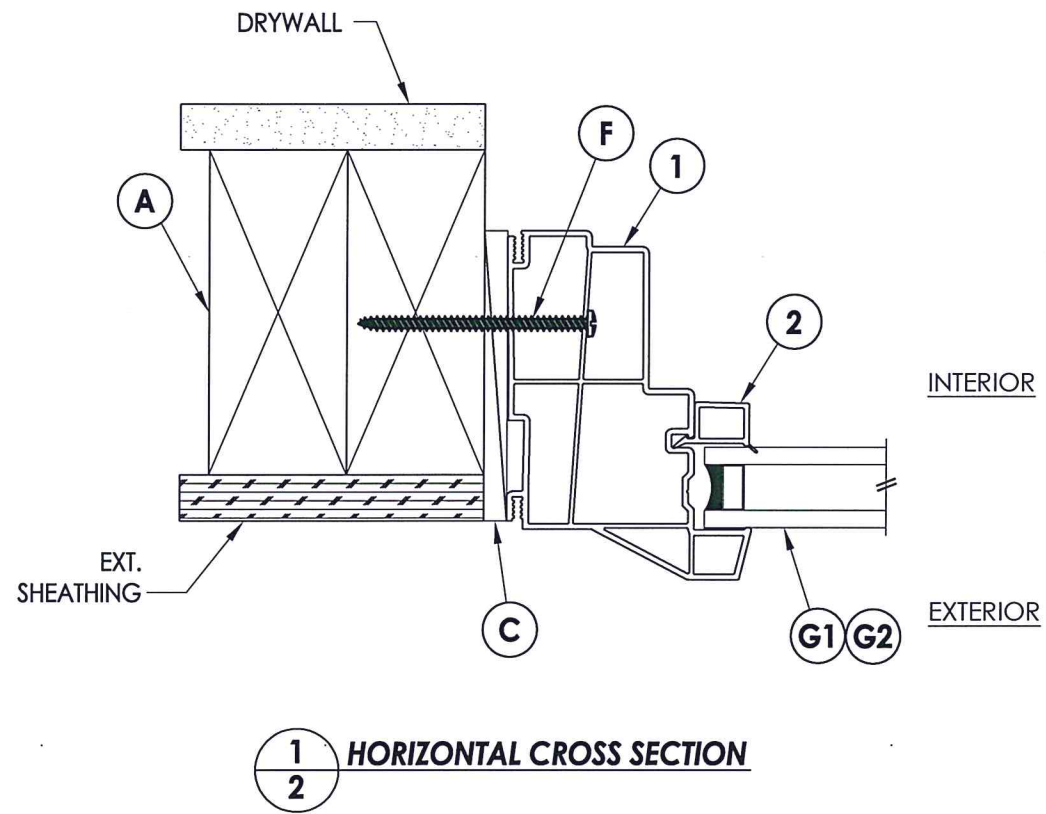
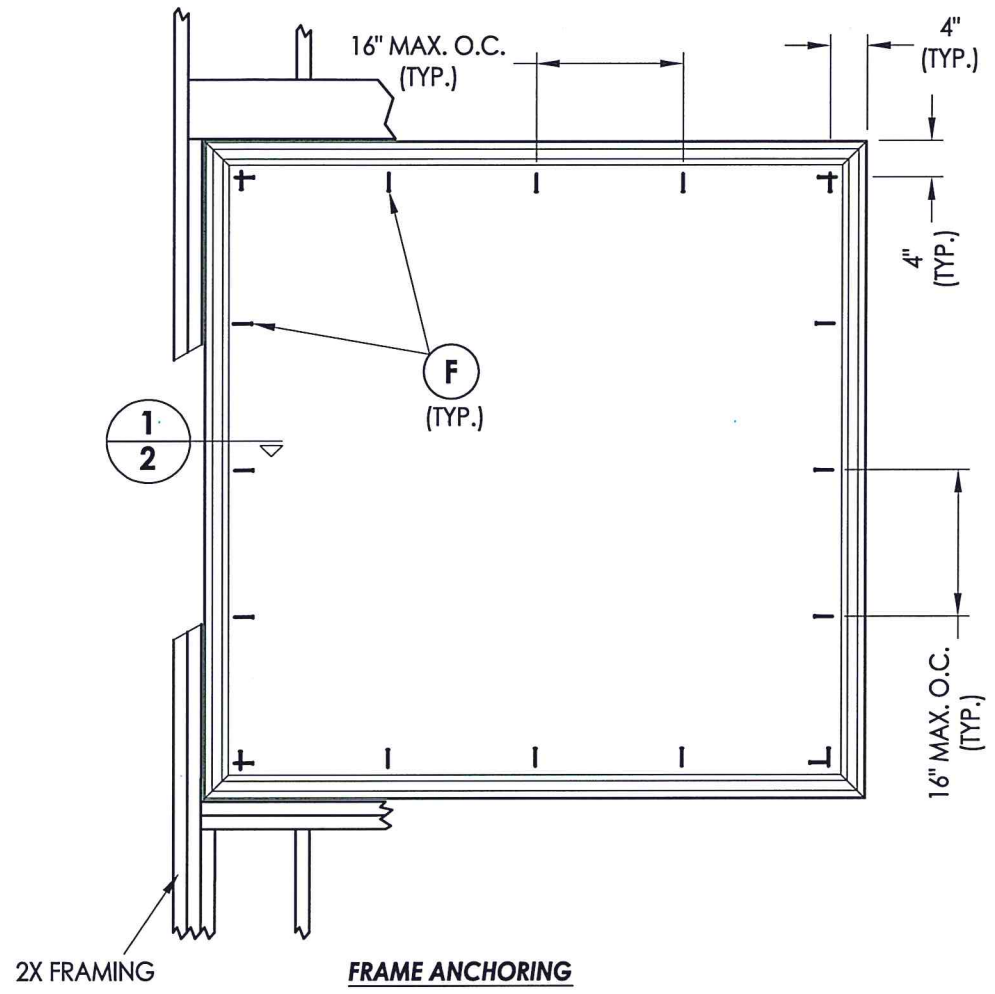
SCALE: N.T.S.

DWG. BY: TRJ

CHK. BY: LFS

DRAWING NO.: TX-4863

SHEET 1 OF 3



Documents Prepared By: Lyndon F. Schmidt, P.E.
 TEXAS P.E. #104123

RW BUILDING CONSULTANTS, INC.
 P.O. Box 230 Valrico FL 33595
 Phone No.: 813.659.9197

TEXAS BOARD OF PROFESSIONAL ENGINEERS
 CERTIFICATE OF REGISTRATION # F-11852

PRODUCT: FIXED WINDOW

PART OR ASSEMBLY: FRAME ANCHORING & CROSS SECTION

| NO. | DATE | BY | REVISIONS |
|-----|------|----|-----------|
| | | | |
| | | | |
| | | | |

DATE: 5/13/19

SCALE: N.T.S.

DWG. BY: TRJ

CHK. BY: LFS

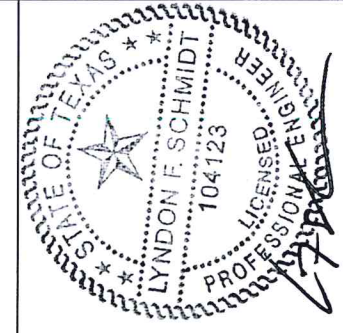
DRAWING NO.: TX-4863

SHEET 2 OF 3

BILL OF MATERIALS

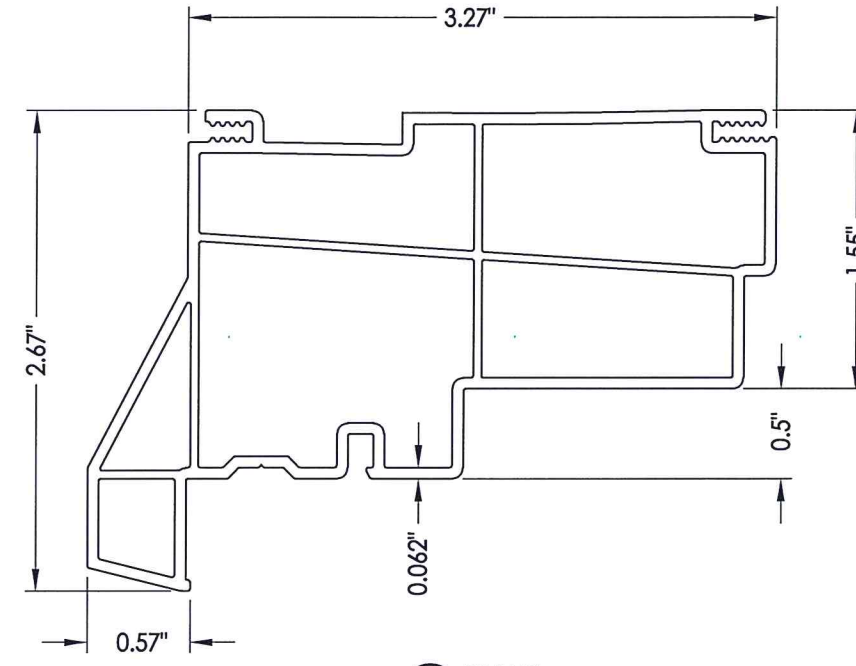
| ITEM # | DESCRIPTION | MATERIAL |
|--------|--|-----------|
| A | 2X FRAMING (SG >= 0.42) | WOOD |
| C | 1/4" MAX. SHIM SPACE | - |
| F | #8 X 2-1/2" PPH SMS (1-5/16" MIN. EMBEDMENT) | STEEL |
| 1 | EXTRUDED VINYL FRAME (781F)* | RIGID PVC |
| 2 | EXTRUDED VINYL GLAZING BEAD (766A)* | RIGID PVC |

* THE APPROVED WHITE RIGID PVC EXTERIOR EXTRUSIONS FOR WINDOWS ARE TO BE PRODUCED BY EXTRUDERS LICENSEES IN "AAMA CERTIFICATION PROGRAMS FOR RIGID PVC EXTRUSIONS".

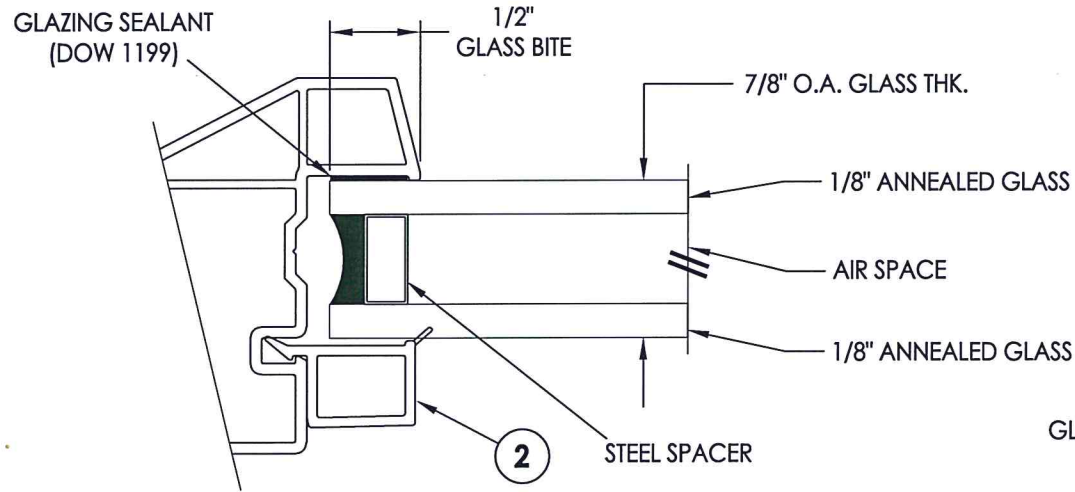


Documents Prepared By: Lyndon F. Schmidt, P.E.
TEXAS P.E. #104123

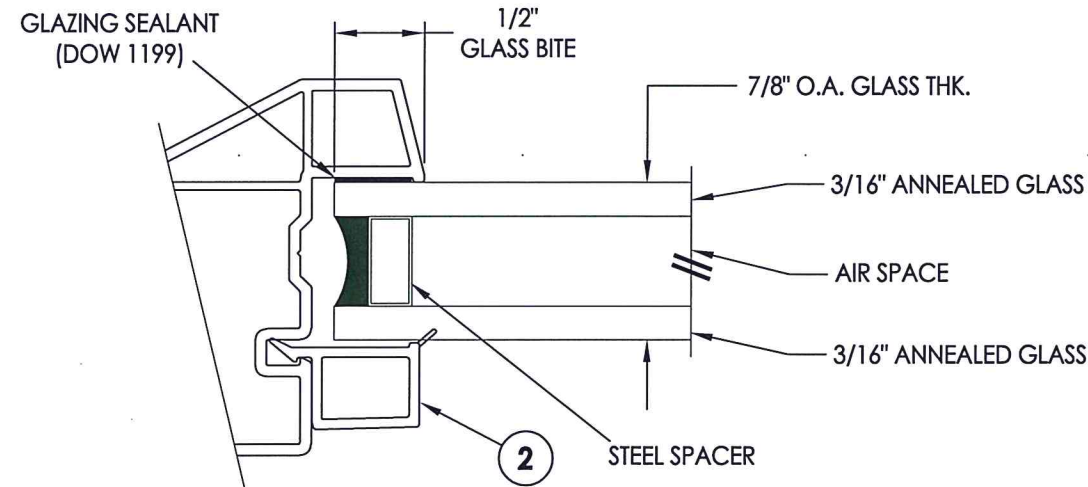
RW BUILDING CONSULTANTS, INC.
P.O. Box 230 Vairico FL, 33595
Phone No.: 813.659.9197
TEXAS BOARD OF PROFESSIONAL ENGINEERS
CERTIFICATE OF REGISTRATION # F-11852



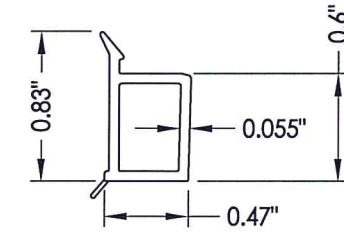
1 FRAME



G1 GLAZING DETAIL



G2 GLAZING DETAIL



2 GLAZING BEAD

PRODUCT: FIXED WINDOW
PART OR ASSEMBLY: BILL OF MATERIALS, COMPONENTS & GLAZING DETAILS

| NO. | DATE | BY |
|-----|------|----|
| | | |
| | | |
| | | |
| | | |
| | | |
| | | |
| | | |
| | | |
| | | |

DATE: 5/13/19
SCALE: N.T.S.
DWG. BY: TRJ
CHK. BY: LFS
DRAWING NO.: TX-4863
SHEET 3 OF 3